

Daffodils

A Project by Serene Lifespaces



Plot No.-B-23, Sector No-8, Ulwe, Navi Mumbai.

PROJECT FEATURES

- G + 7 Storied Residential project.
- Exclusive 1 BHK & 2 BHK flats available.
- Clear Title CIDCO transfer plot.
- "A" class construction with Earthquake resistance RCC structure.
- Excellent planning with good lighting & Ventilation.
- Branded Lift of Reputed Make & Car parking space available.

PROJECT AMENITIES

- Flooring
- Kitchen
- Bath / WC
- Doors
- Windows
- Electrification
- Water
- Colour

Vitrified Flooring in All Rooms.

Granite kitchen platform with S.S. Sink and Designer glazed tiles up to beam level.

Designer glazed tiles up to door level. Branded Sanitarywares.

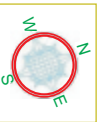
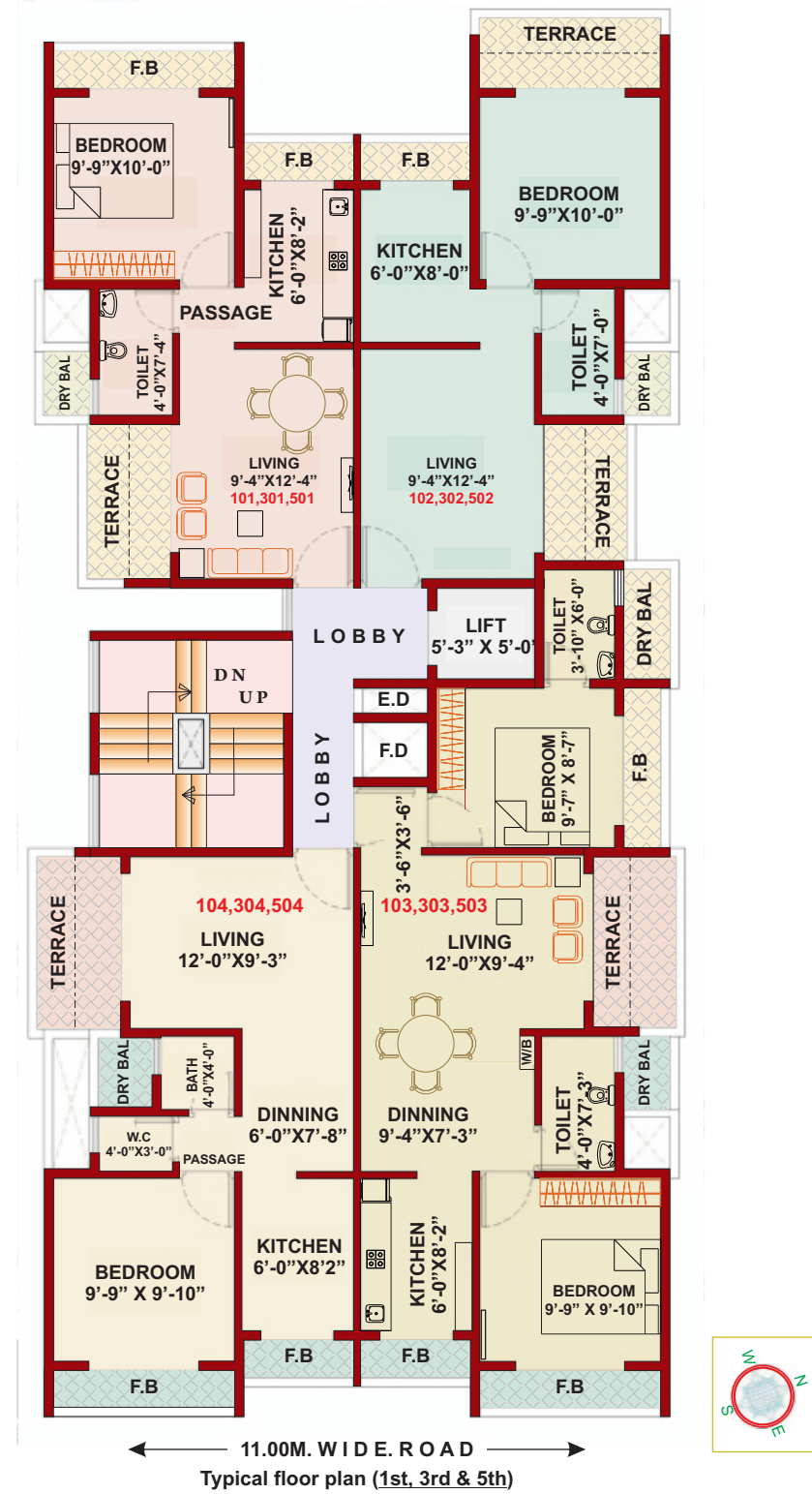
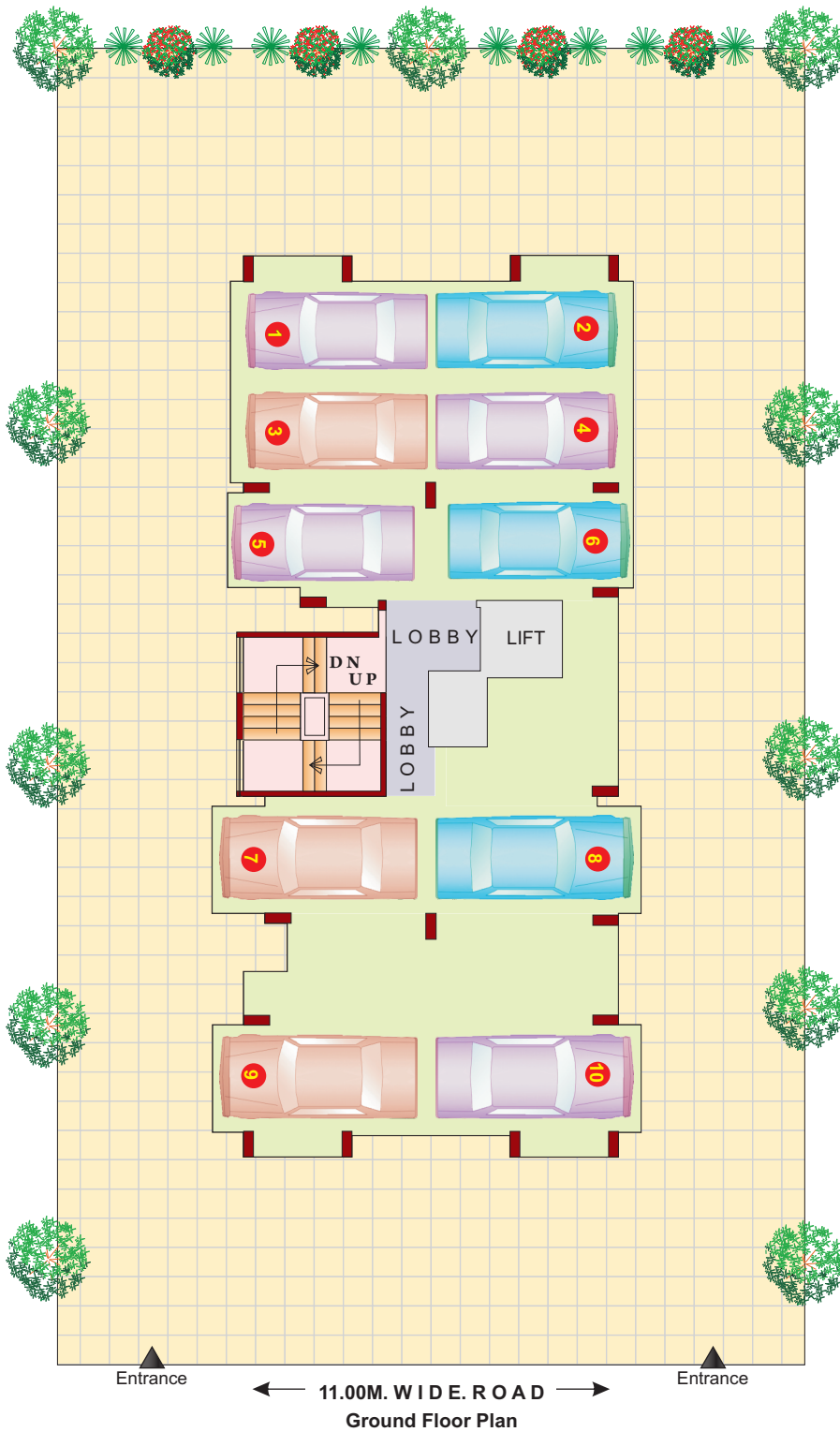
Decorative Laminated Flush Main Doors / Internal Doors.

Powder Coated Aluminum Sliding Windows with Granite Sill.

Concealed Copper Wiring with provision for Cable TV & Phone in Living & Bedroom.

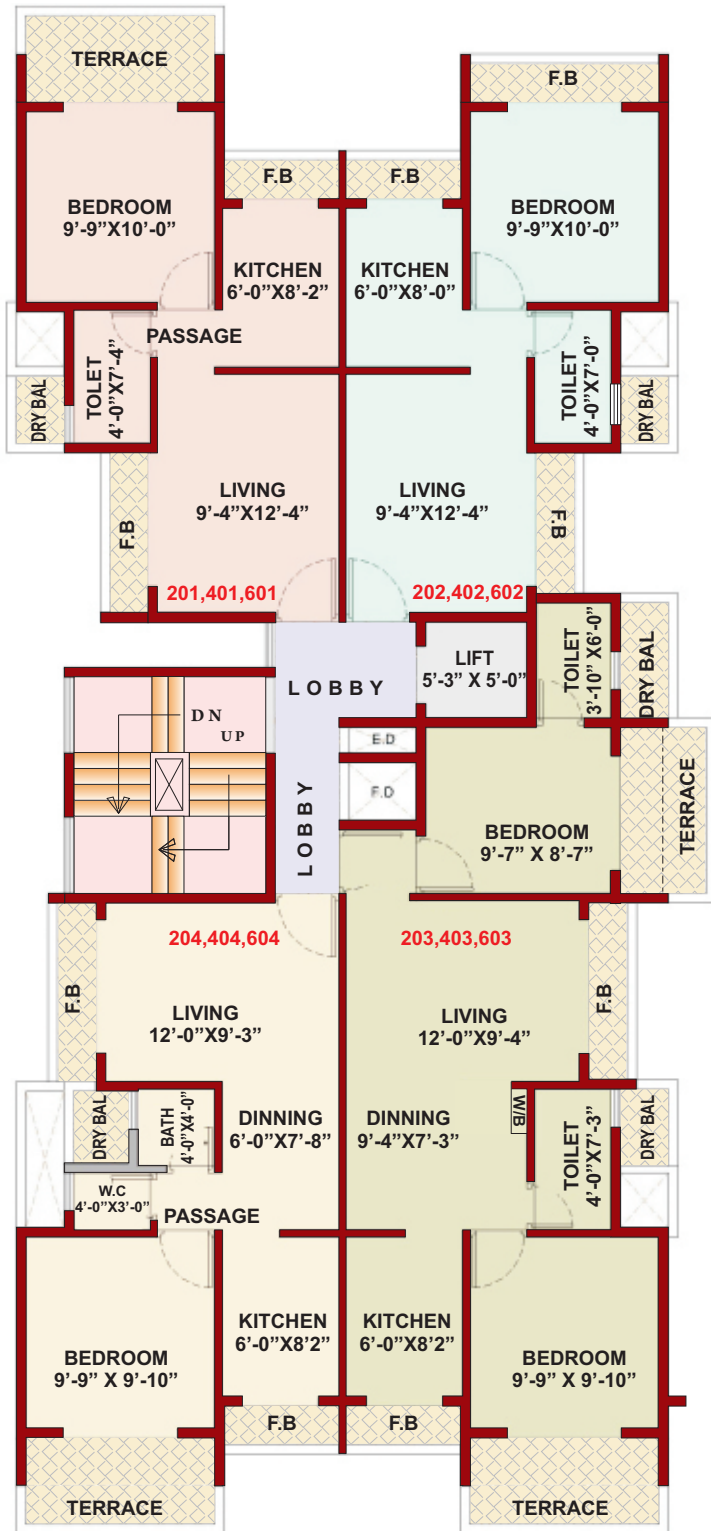
Under Ground and Overhead Water Tank with Adequate Water Storage Capacity.

Distemper Paint on Internal Walls & 100% Acrylic Emulsion Paint for External Walls.

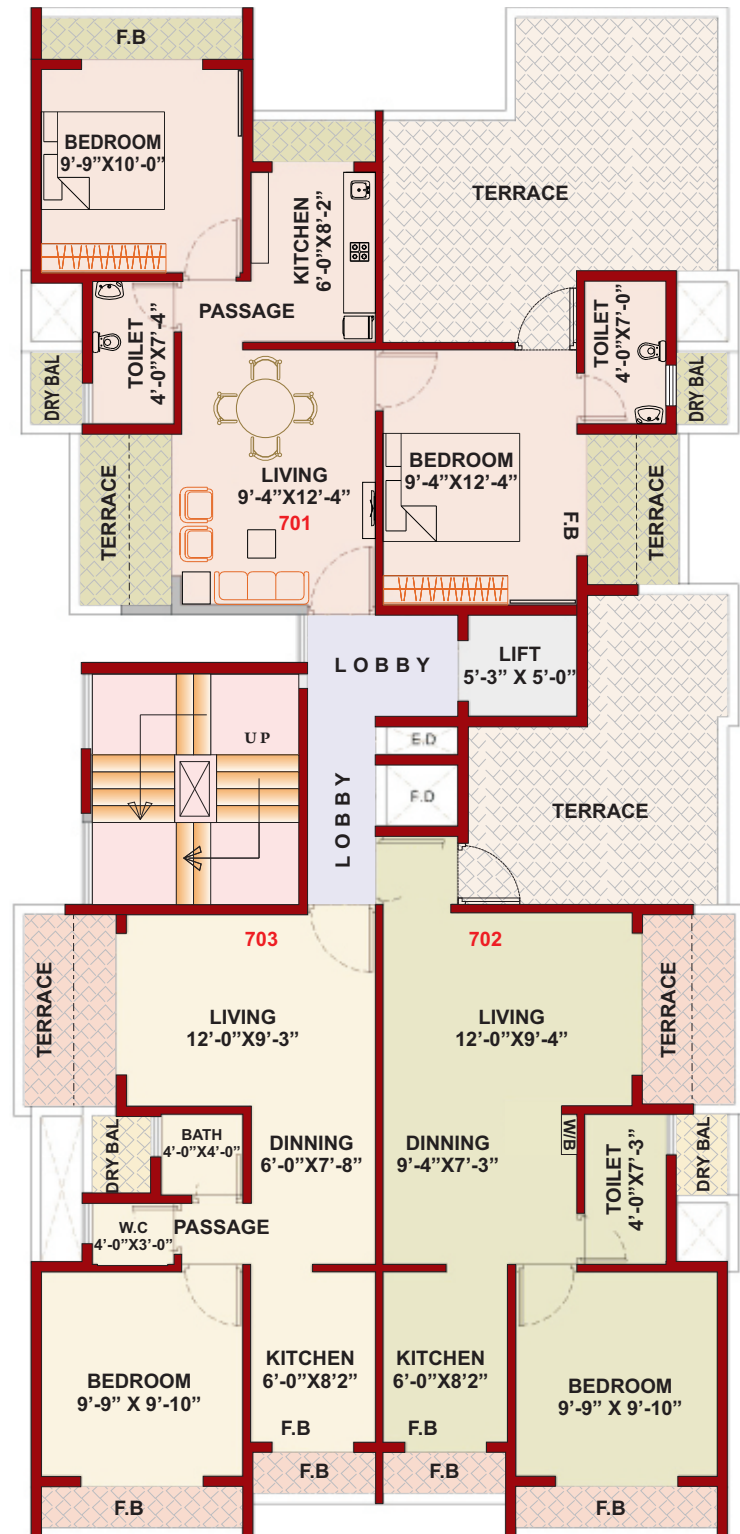


LOCATION FEATURES OF ULWE

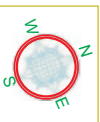
- ✿ Excellent Connectivity to Palm Beach Road, Mumbai - Pune Express Highway, CBD Belapur, Vashi, Mumbai - Goa Highway, JNPT.
- ✿ 10 Minutes Drive from the Prop. Navi Mumbai International Airport.
- ✿ 15 Minutes Drive from existing Seawood Darave, CBD Belapur, Nerul Railway Strn.
- ✿ Proximity to Banks, Markets, Hospital, Schools, Colleges, Gardens, Play Ground & Proposed World class sports stadium.
- ✿ 10-15 Minutes walking distance from Railway Station & CIDCO Unnatti Project.

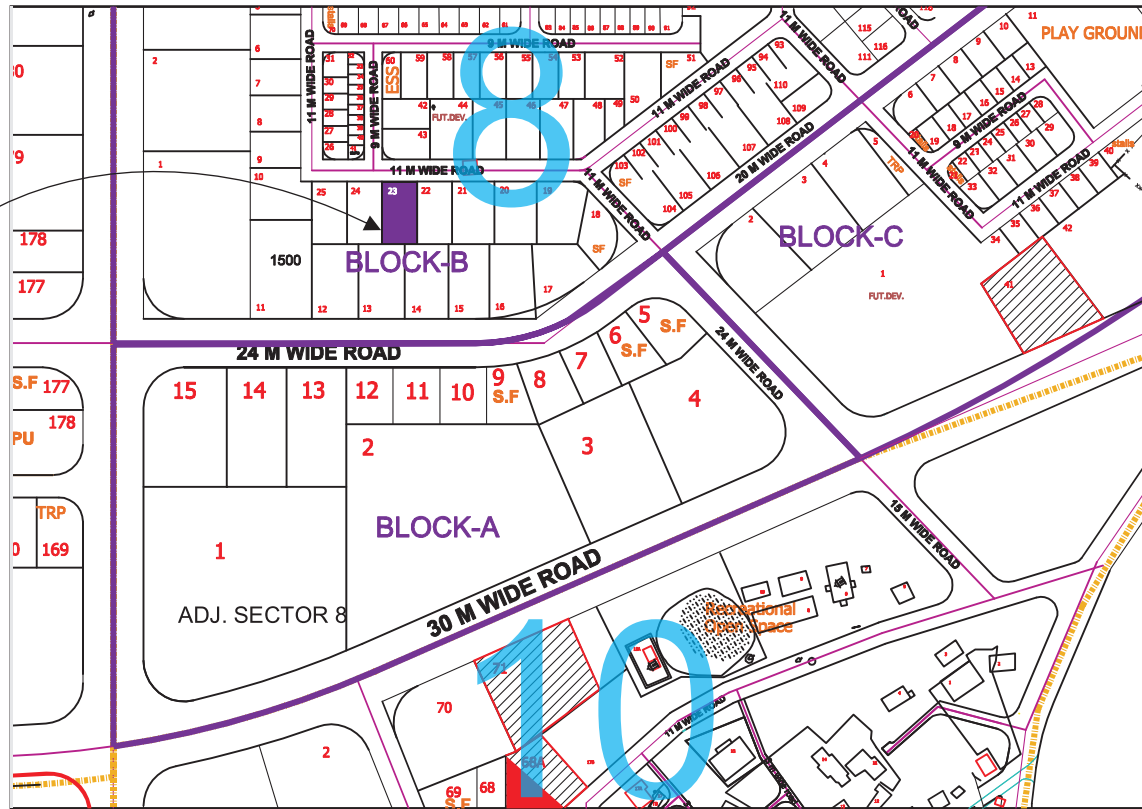


← 11.00M. WIDE ROAD →
Typical floor plan (2nd, 4th & 6th)



← 11.00M. WIDE ROAD →
7th Floor Plan





ON GOING PROJECTS



Marigold

Plot No.125, Sector - 20, Ulwe.



Lily White

Plot No.21, Sector - 3, Ulwe.

Builders & Developers

Legal Advisor:
Adv. Minal B. Khona

Architect:
Rajesh R.C.

R.C.C. Consultant:
CSE Consultants

Corp. Office : 202, Damji Shamji Industrial Estate, 2nd Floor, Veera Desai Road, Andheri (W), Mumbai - 400 053
Mob.: +91 98200 50425 | Tel.: +91 22 2673 4475 | Email: serene.lifespaces@yahoo.com

Disclaimer : All plans, drawings, amenities, facilities etc. are subject to the approval of the respective authorities and would be changed, if necessary. Discretion remains with the developers. All rendering and maps are artist's conception and not actual depictions.