

Lily White

A Project by Serene Lifespaces



Plot No. 21, Sector - 3, Ulwe, Navi Mumbai

PROJECT FEATURES

- G + 4 Storied Commercial & Residential project.
- Exclusive Shops, 1 BHK & 2 BHK flats available.
- Clear Title CIDCO transfer plot.
- "A" class construction with Earthquake resistance RCC structure.
- Excellent planning with good lighting & Ventilation.
- Branded Lift of Reputed Make & Car parking space available.

PROJECT AMENITIES

- Flooring Vitrified Flooring in All Rooms.
- Kitchen Granite kitchen platform with S.S. Sink and Designer glazed tiles up to beam level.
- Bath / WC Designer glazed tiles up to door level. Branded Sanitarywares.
- Doors Decorative Laminated Flush Main Doors / Internal Doors.
- Windows Powder Coated Aluminum Sliding Windows with Marble Sill.
- Electrification Concealed Copper Wiring with provision for Cable TV & Phone in Living & Bedroom.
- Water Under Ground and Overhead Water Tank with Adequate Water Storage Capacity.
- Colour Distemper Paint on Internal Walls & 100% Acrylic Emulsion Paint for External Walls.
- Terrace Special Brickbat Water Proofing Treatment.

LOCATION FEATURES OF ULWE

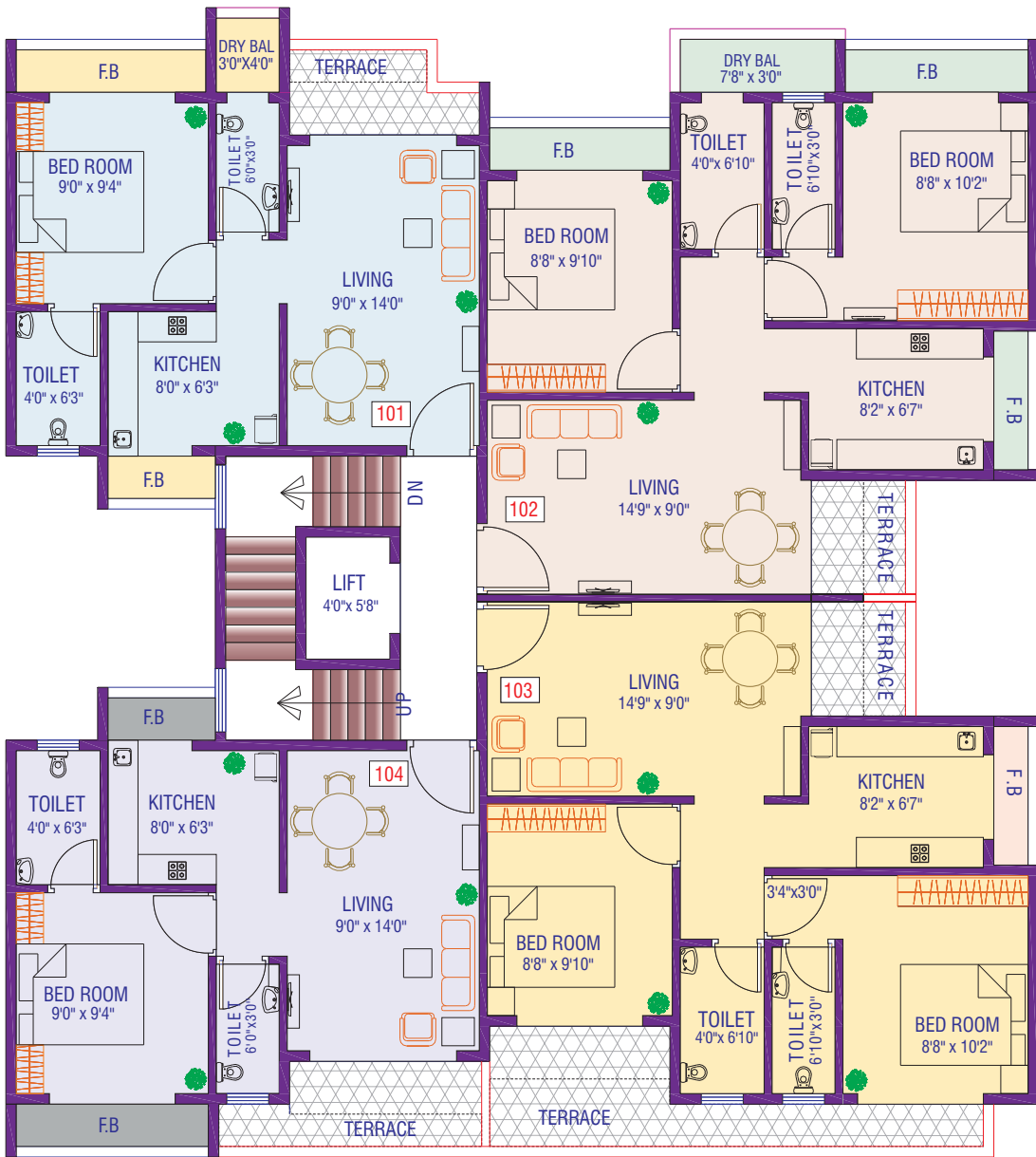
- Excellent Connectivity to Palm Beach Road, Mumbai - Pune Express Highway, CBD Belapur, Vashi, Mumbai - Goa Highway, JNPT.
- 5 Minutes Drive from the Prop. Navi Mumbai International Airport.
- 10 Minutes Drive from existing Seawood Darave, CBD Belapur, Nerul Railway Stn.
- Proximity to Banks, Markets, Hospital, Schools, Colleges, Gardens, Play Ground.
- 5-7 Minutes walking distance from Railway Station & CIDCO Unnatti Project.
- Proposed World class sports stadium.



← 9.00 M. WIDE ROAD →

Ground Floor Plan

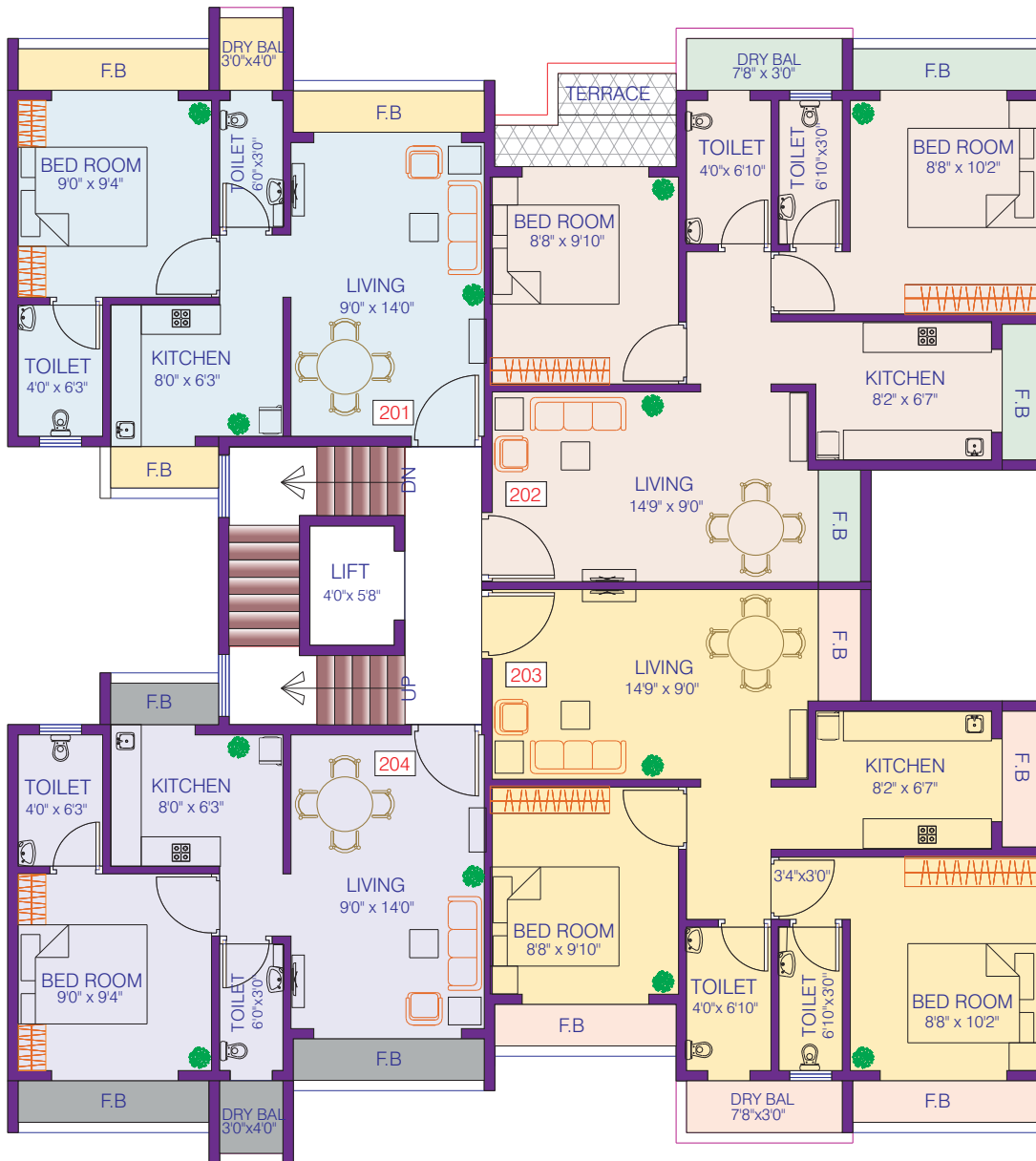




← 9.00 M. WIDE ROAD →

1st Floor Plan





← 9.00 M. WIDE ROAD →
2nd Floor Plan





← 9.00 M. WIDE ROAD →
3rd Floor Plan





← 9.00 M. WIDE ROAD →
4th Floor Plan





Builders & Developers

Legal Advisor:
Adv. Sachin Tambat

Architect:
Rajesh R.C.

R.C.C. Consultant:
CSE Consultants

Corp. Office : 202, Damji Shamji Industrial Estate, 2nd Floor, Veera Desai Road, Andheri (W), Mumbai - 400 053
Mob.: +91 98200 50425 | **Tel.:** +91 22 2673 4475 | **Email:** serene.lifespaces@yahoo.com

Disclaimer : All plans, drawings, amenities, facilities etc. are subject to the approval of the respective authorities and would be changed, if necessary. Discretion remains with the developers. All rendering and maps are artist's conception and not actual depictions.